









**Afmetingen: breedte 40,0 x hoogte 33,3 cm bij 5,5 kruissteken per cm.  
(borduur over 1 draad)**



## Kleurenlijst

Hieronder staat aangegeven welke kleuren u nodig heeft om dit patroon uit te werken tot een prachtig kunstwerk!

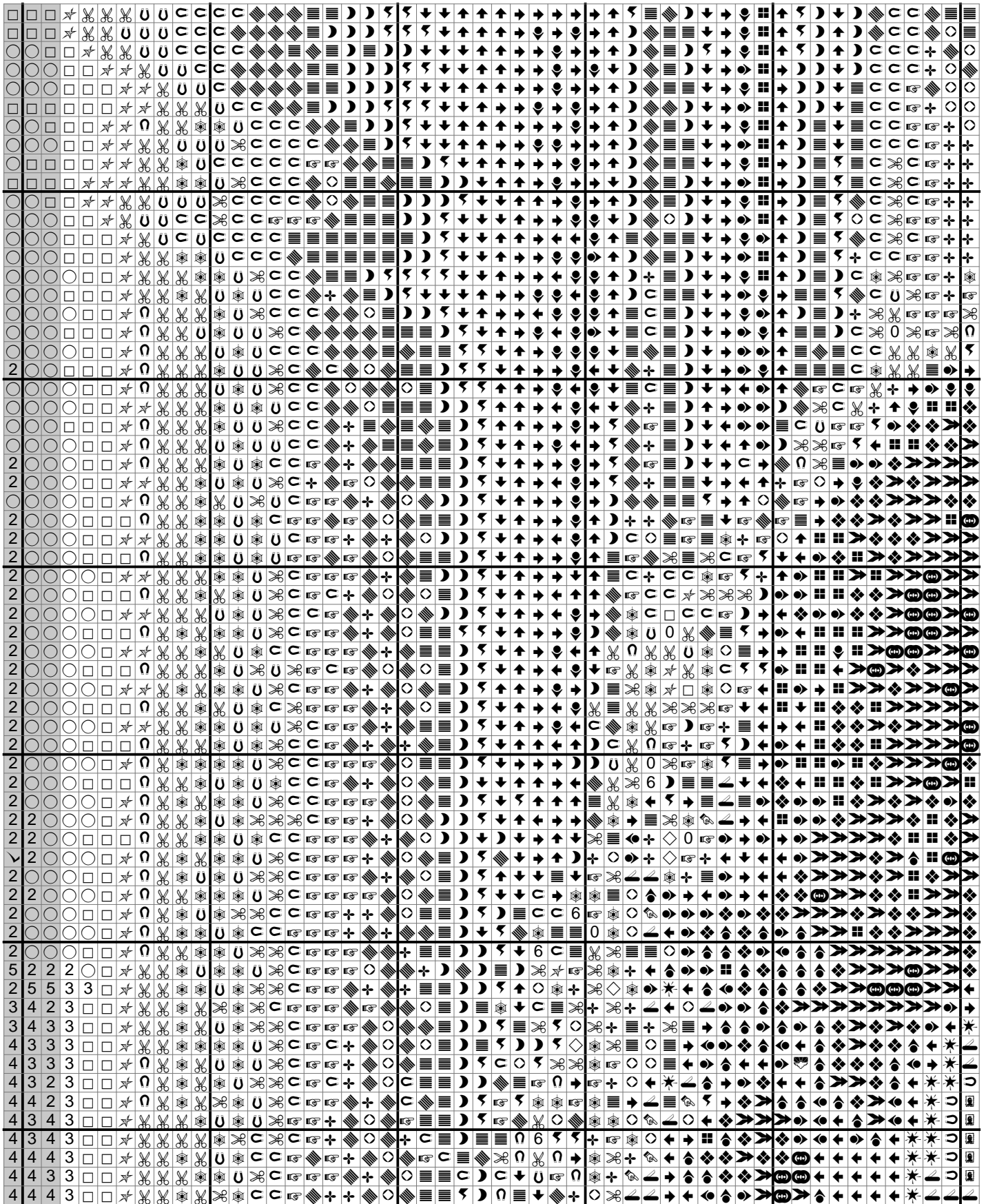
Symbol	Merk / Brand	No.	Count (Aantal)
□	DMC	06	1175 (1)
⬆	DMC	09	572 (1)
✠	DMC	22	101 (1)
👉	DMC	167	276 (1)
👈	DMC	300	934 (1)
Ⓜ	DMC	310	695 (1)
👉	DMC	372	780 (1)
👈	DMC	400	334 (1)
👉	DMC	420	669 (1)
✂	DMC	422	984 (1)
←	DMC	433	1498 (1)
✨	DMC	434	1579 (1)
👉	DMC	435	509 (1)
◇	DMC	437	656 (1)
3	DMC	543	360 (1)
↙	DMC	611	694 (1)
👉	DMC	612	890 (1)
👈	DMC	642	744 (1)
0	DMC	738	1100 (1)
4	DMC	739	678 (1)
1	DMC	762	434 (1)
👉	DMC	801	1067 (1)
☂	DMC	816	162 (1)
↙	DMC	817	94 (1)
○	DMC	822	921 (1)
↑	DMC	829	493 (1)
☾	DMC	840	1065 (1)
Ⓒ	DMC	841	725 (1)
Ω	DMC	842	719 (1)
➔	DMC	869	1249 (1)
⏏	DMC	898	1092 (1)
⦿	DMC	935	50 (1)
❖	DMC	938	1029 (1)
6	DMC	945	905 (1)
✓	DMC	3024	591 (1)
👉	DMC	3031	514 (1)
⊖	DMC	3032	675 (1)
+	DMC	3045	575 (1)

Symbol	Merk / Brand	No.	Count (Aantal)
	DMC	3064	196 (1)
	DMC	3371	914 (1)
	DMC	3782	655 (1)
	DMC	3826	431 (1)
	DMC	3828	748 (1)
	DMC	3862	774 (1)
	DMC	3863	1134 (1)
	DMC	3864	1880 (1)
5	DMC	3865	1504 (1)
8	DMC	B5200	2794 (1)
7	DMC	Blanc	856 (1)
2	DMC	Ecru	786 (1)



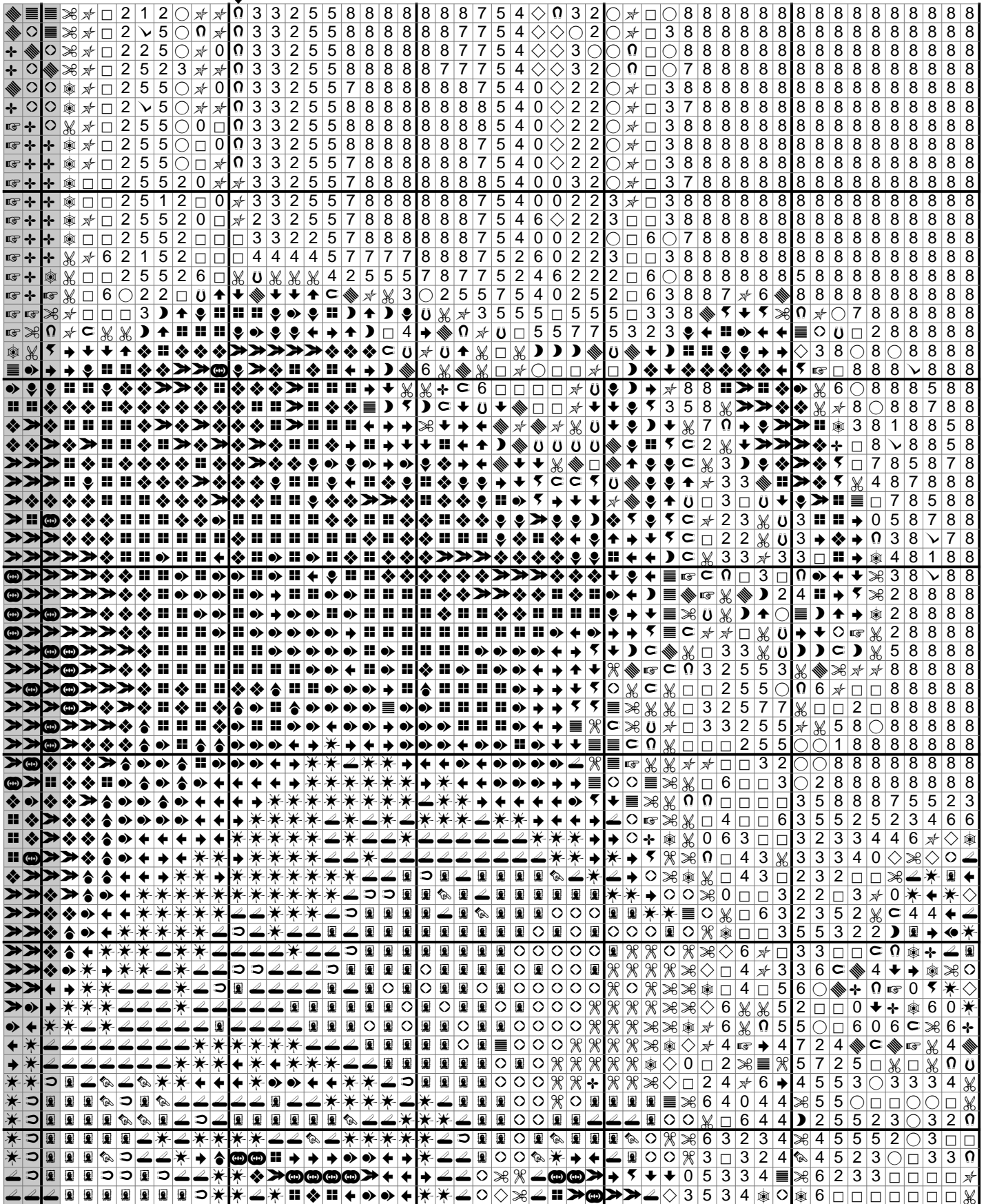
Rij: 1 - Kolom: 2

Let op: Gearceerde vlakken overlappen met vorige pagina's.



Rij: 1 - Kolom: 3

Let op: Gearceerde vlakken overlappen met vorige pagina's.

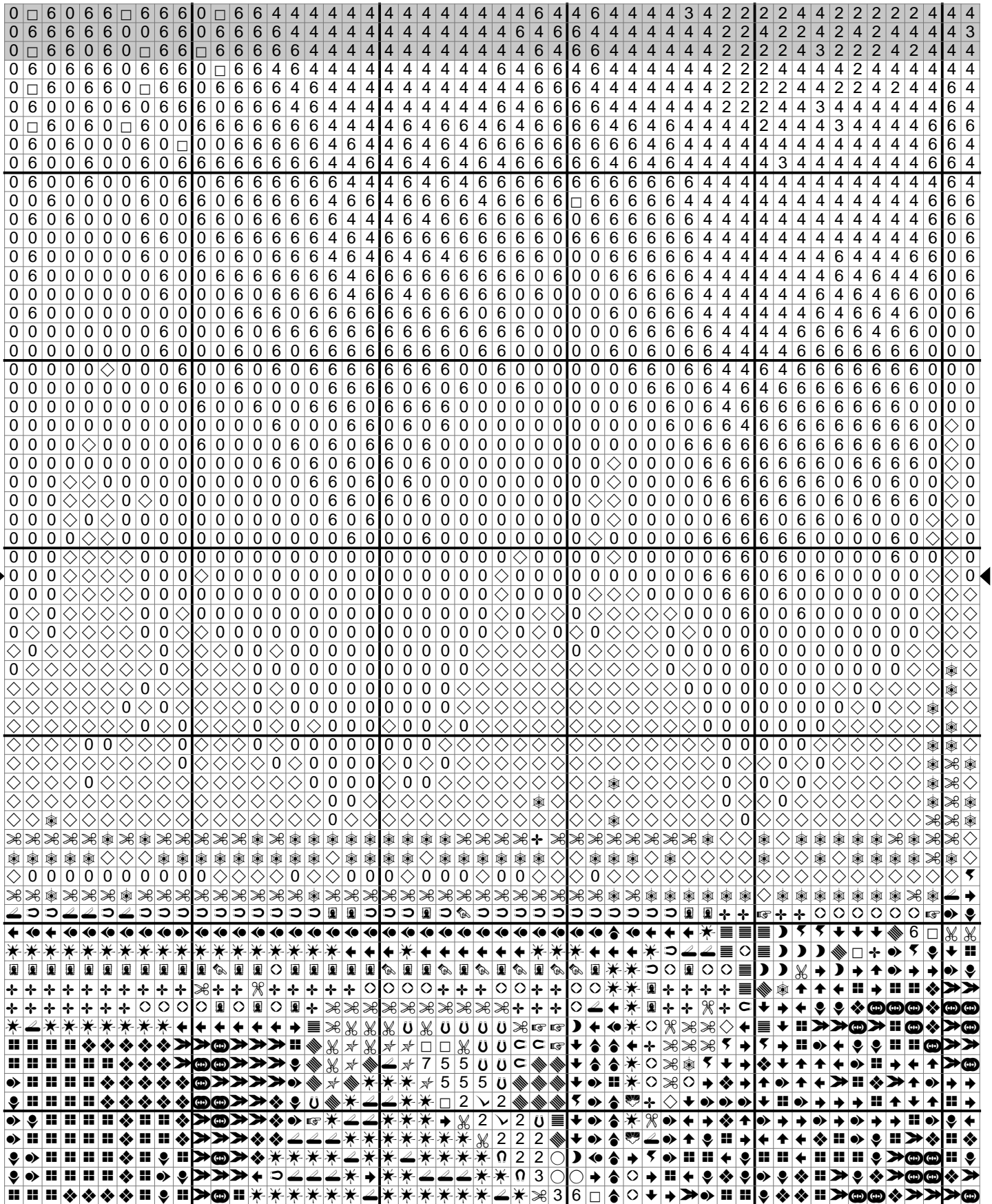






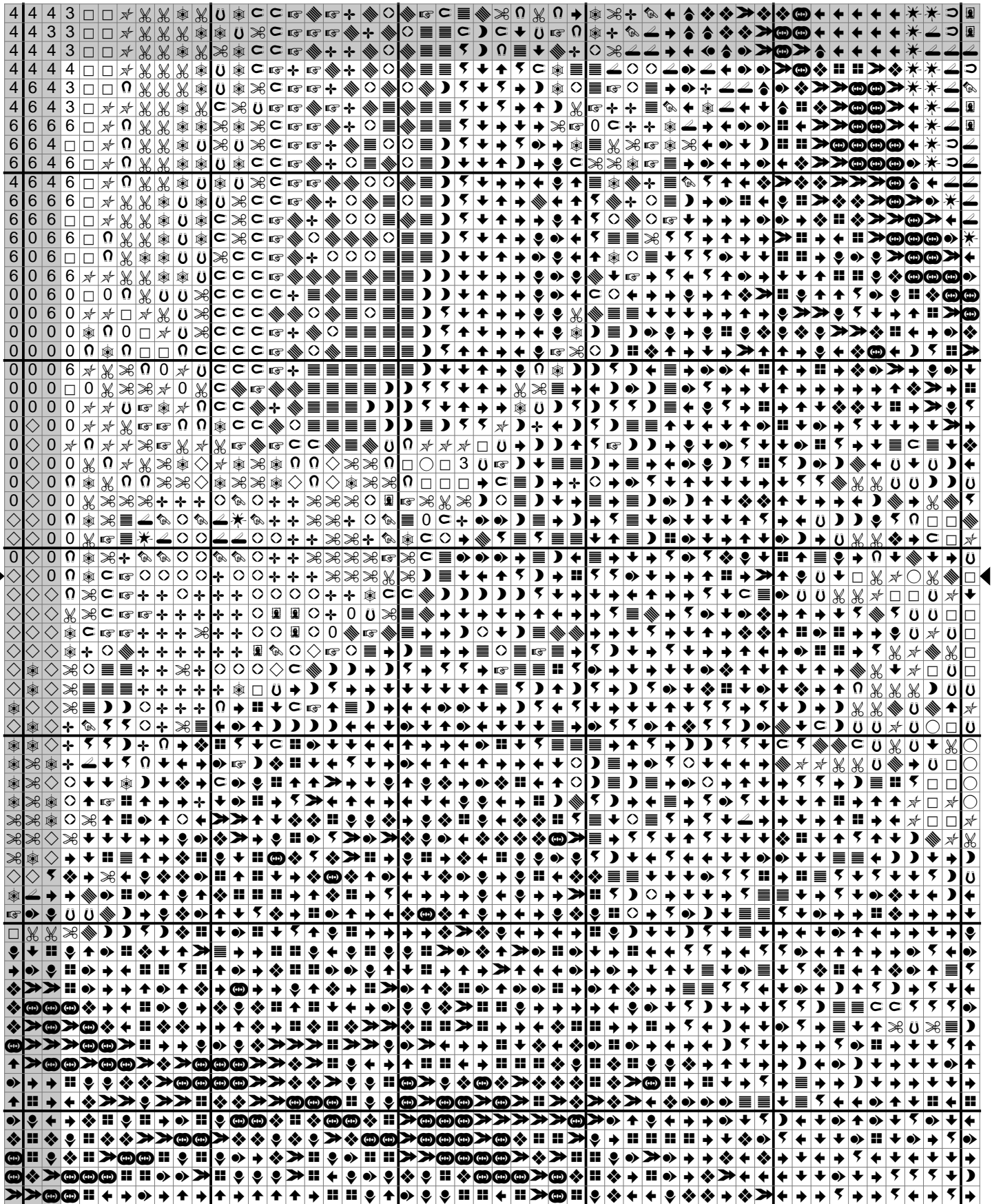
Rij: 2 - Kolom: 1

Let op: Gearceerde vlakken overlappen met vorige pagina's.



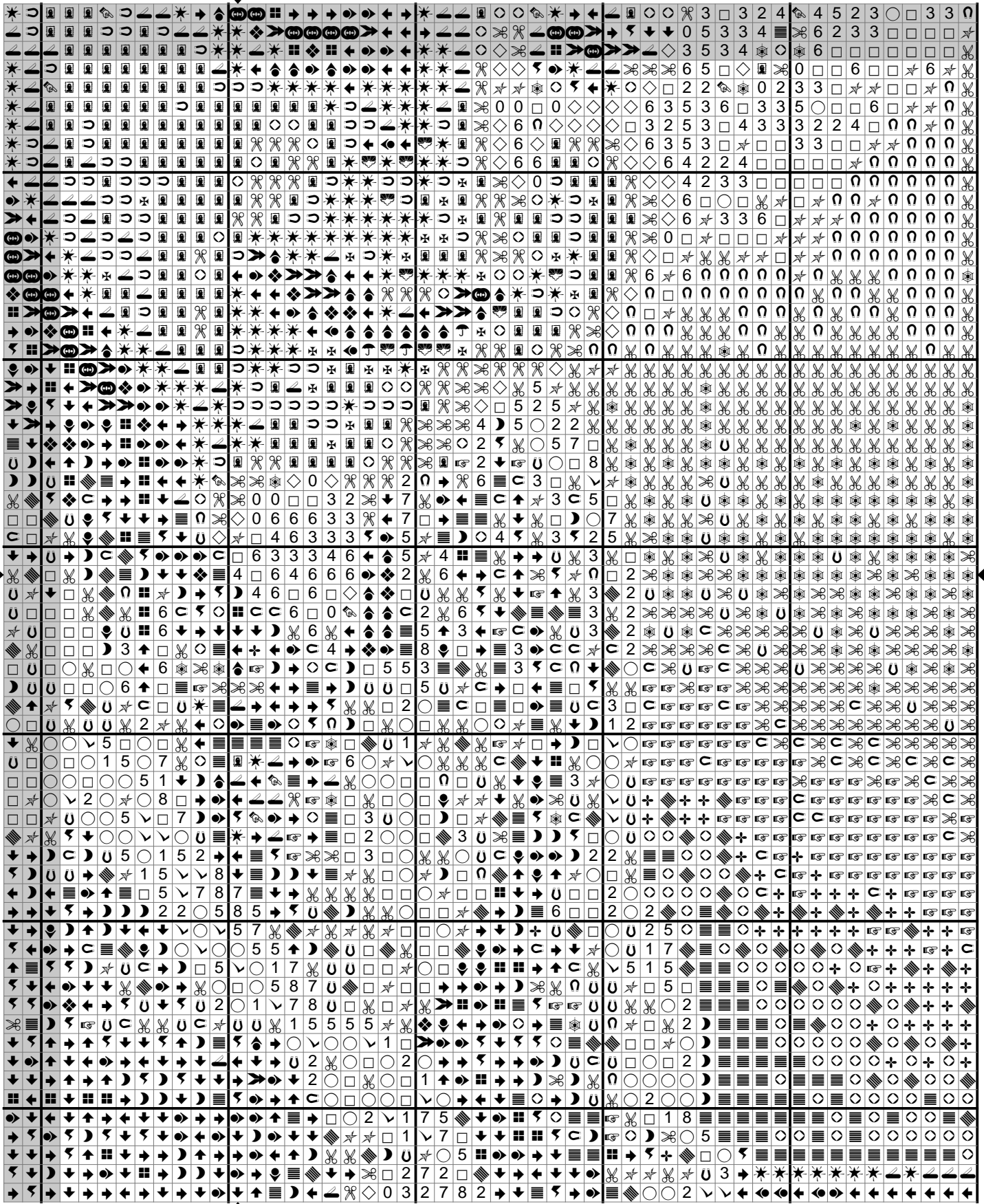
Rij: 2 - Kolom: 2

Let op: Gearceerde vlakken overlappen met vorige pagina's.



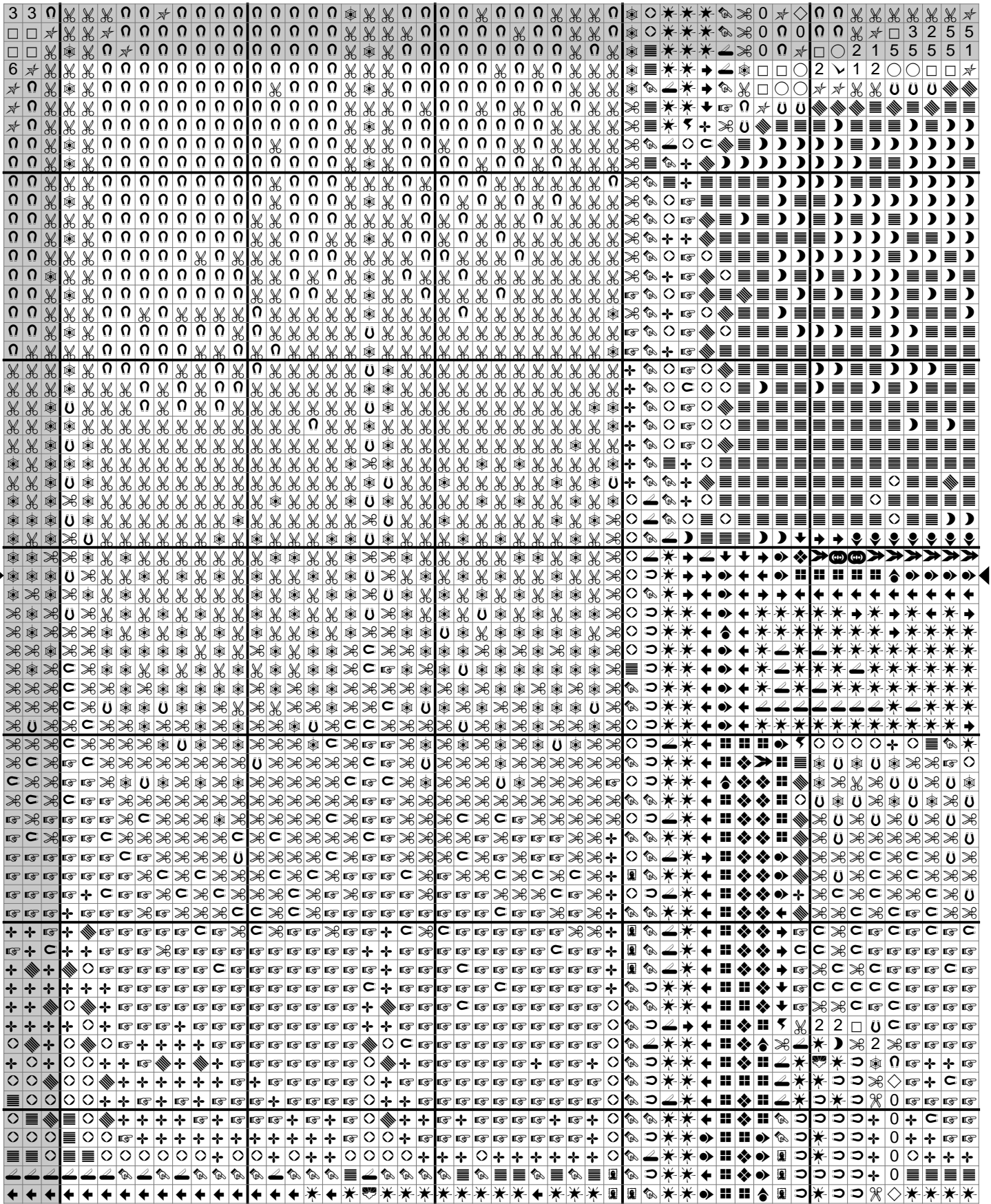
Rij: 2 - Kolom: 3

Let op: Gearceerde vlakken overlappen met vorige pagina's.



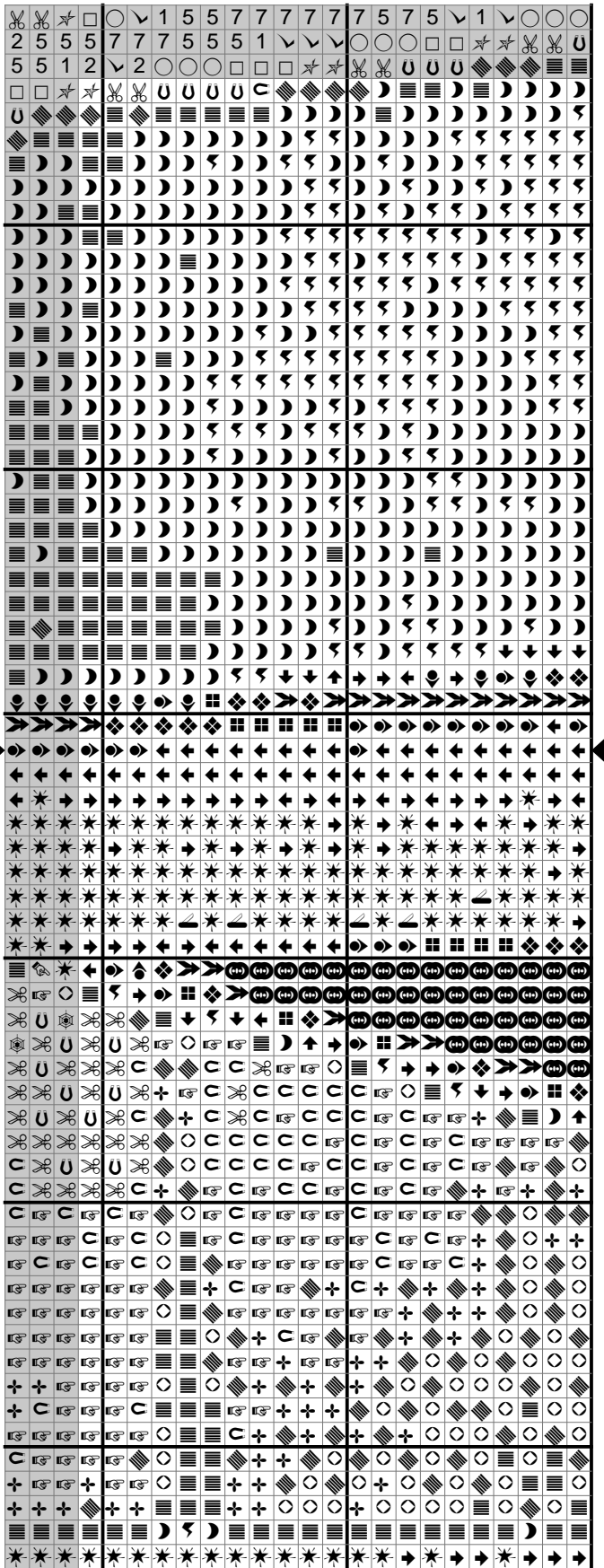
Rij: 2 - Kolom: 4

Let op: Gearceerde vlakken overlappen met vorige pagina's.



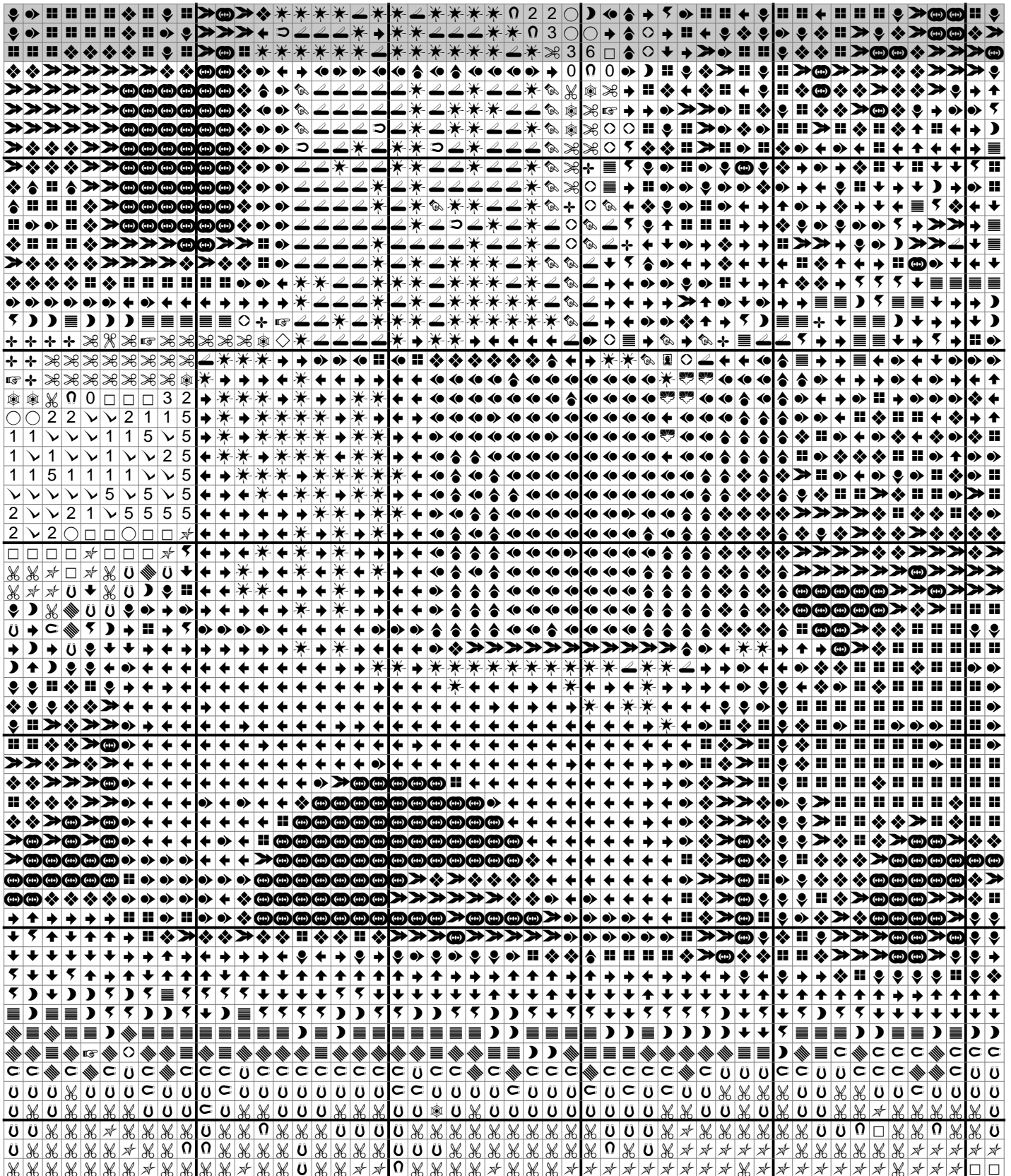
Rij: 2 - Kolom: 5

Let op: Gearceerde vlakken overlappen met vorige pagina's.



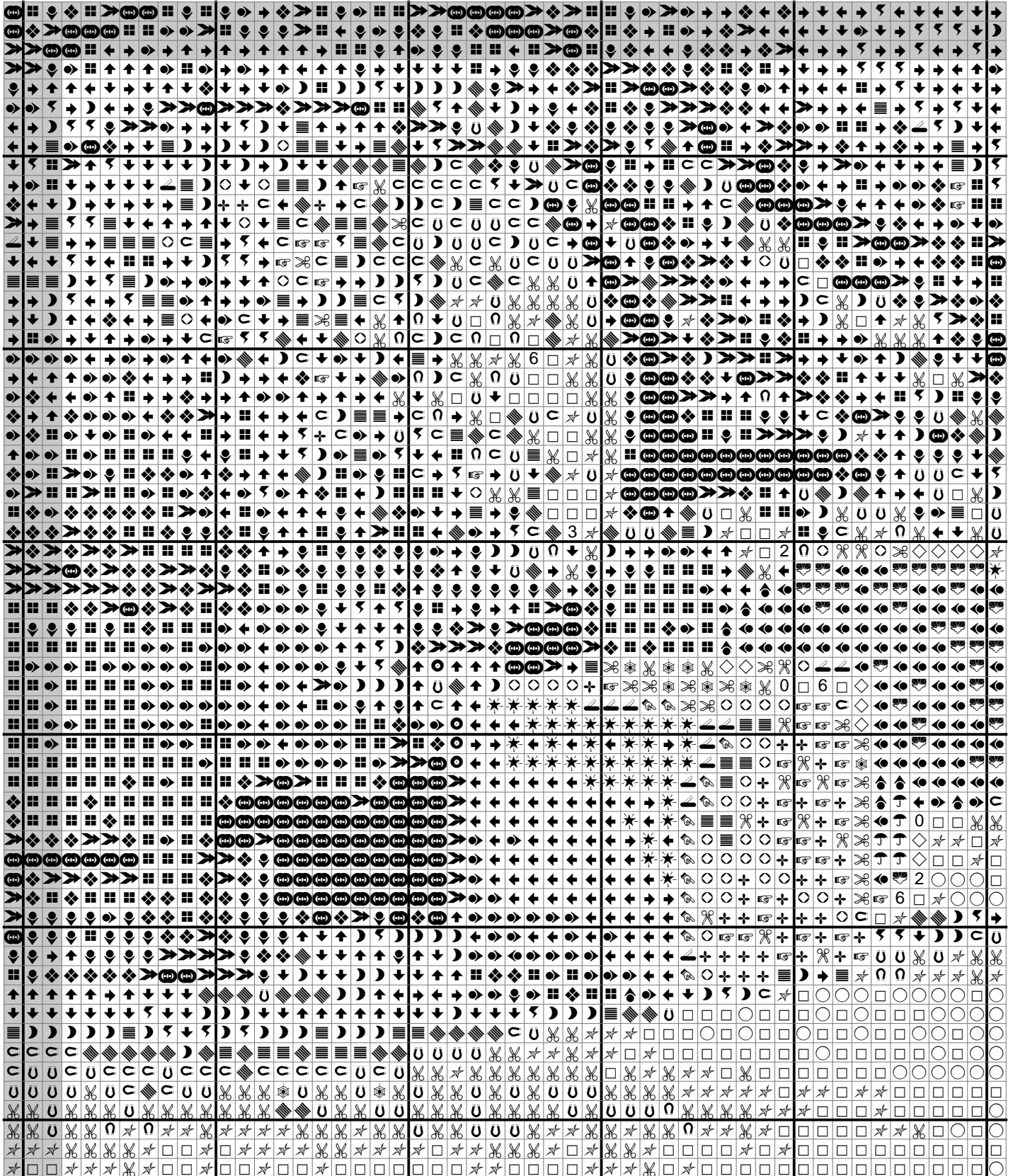
Rij: 3 - Kolom: 1

Let op: Gearceerde vlakken overlappen met vorige pagina's.



Rij: 3 - Kolom: 2

Let op: Gearceerde vlakken overlappen met vorige pagina's.



Rij: 3 - Kolom: 3

Let op: Gearceerde vlakken overlappen met vorige pagina's.

